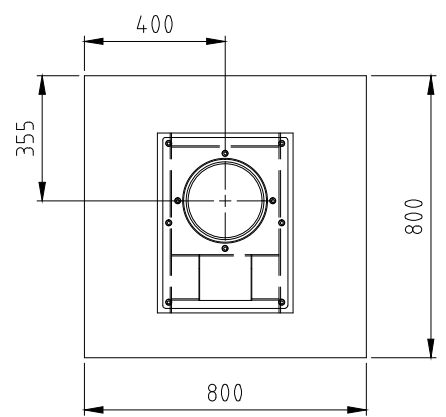


| ISS |     | DRWN | CHANGE  | CHKD | APPD | DATE     | CN#  |
|-----|-----|------|---|------|------|----------|------|
| 1   | AJL |      | ORIGINAL                                      | GL   | GL   | 23/02/13 |      |
| 2   | MM  |      | BOLLARD COVER CHANGED, BLINDING LAYER NOW 100 | GL   | GL   | 16/08/18 | 9044 |

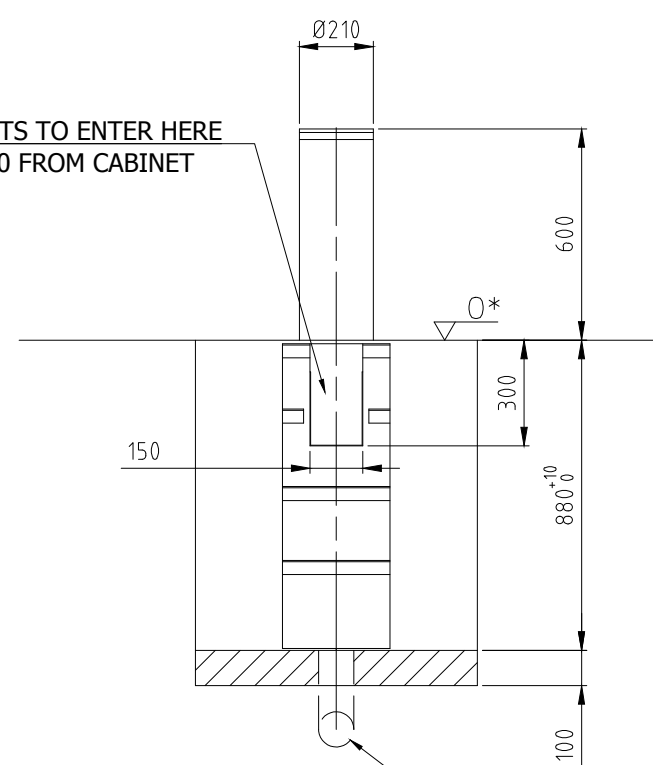
**CONCRETE SPECIFICATION**

- CONCRETE DESIGN TO BS EN 206:2013 AND BS EN 8500-1:2015
- CEMENT ACCORDING TO BS EN 197-1:2011
- AGGREGATE ACCORDING TO BS EN 12620:2013
- MAX SIZE OF AGGREGATE 20mm
- CONCRETE GRADE C30
- WATER-CEMENT RATIO 0.60
- CEMENT CONTENT 280kg/m<sup>3</sup>

ALLOW EACH POUR OF CONCRETE TO CURE FOR 7 DAYS MINIMUM

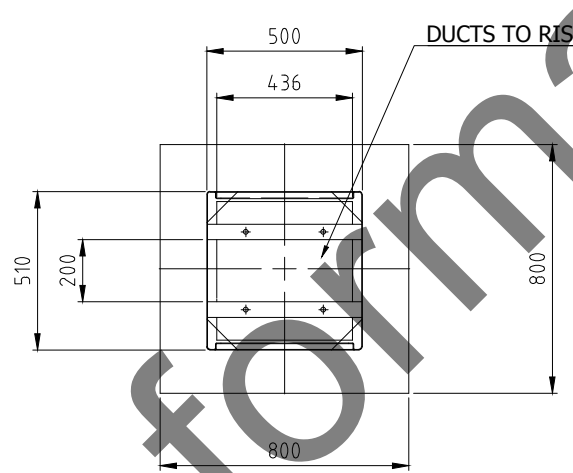


DUCTS TO ENTER HERE  
Ø100 FROM CABINET



Ø100 DRAINAGE DUCT  
TO SITE DRAINAGE

\* TOP OF FOUNDATION MUST BE LEVEL TO ±5mm



DUCTS TO RISE HERE  
LOOP DETAIL  
ALL CORNERS

EDGES OF LOOPS TO BE OFFSET 500mm FROM KERB ON EACH SIDE

ALL MESH OR STEEL REINFORCING MUST BE 100MIN. BELOW LOOPS.

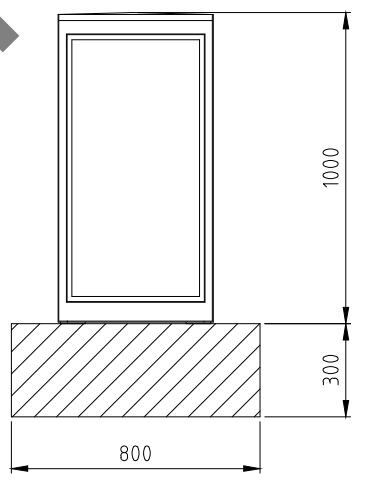
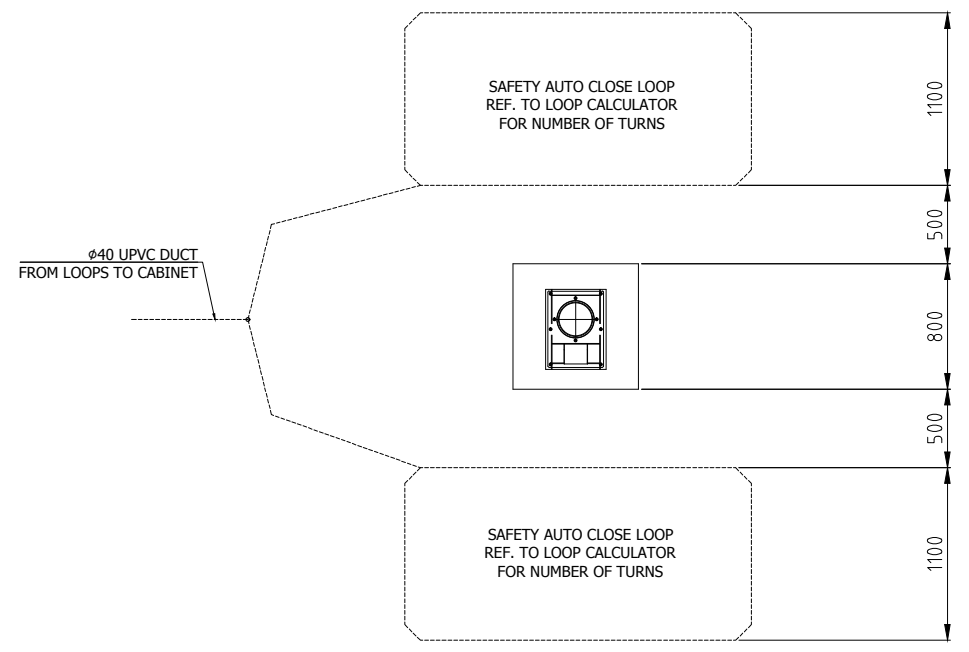
VEHICLE DETECTOR LOOPS INSTALLED INTO SLOTS CUT INTO ROAD SURFACE. LOOP SLOT DIMS. 8 WIDE BY 25 TO 50 DEEP

SLOTS FOR LOOPS TO HAVE CORNERS CHAMFERED AS SHOWN ON DRAWING. LOOP CABLE TO BE WRAPPED AROUND LOOP SLOT SEVERAL TIMES (SEE NOTE ON DRAWING).

TWIST CABLE TAILS TOGETHER (APPROX. 3 TWISTS PER 25mm) BETWEEN CORNER OF LOOP IN ROAD AND THE LOOP AMPLIFIER.

AFTER INSTALLATION AND TESTING OF LOOP, SLOTS TO BE BACK FILLED WITH BITUMEN OR CEMENT GROUT. LOOP CABLES TO BE FREE OF ANY JOINTS. LOOP LAYOUT MAY BE ALTERED DEPENDING ON SITE CONDITIONS.

**LOOP DETAILS**



CABINET DETAIL

ALL ANGLES ARE PERPENDICULAR UOS  
CONSULT DESIGN OFFICE IF ROADWAY IS NOT LEVEL TO ±10mm

DIMENSIONS IN MILLIMETERS

| SCALE | TOLERANCES   |
|-------|--------------|
| NTS   | ISO 2768-m,k |

THIRD ANGLE PROJECTION

THE INFORMATION CONTAINED IN THIS DRAWING IS CONFIDENTIAL AND MAY NOT BE PASSED IN WHOLE OR IN PART TO THIRD PARTIES WITHOUT THE PERMISSION OF FRONTIER PITTS LTD.



FRONTIER-PITTS LTD  
CROMPTON HOUSE, CROMPTON WAY,  
CRAWLEY, WEST SUSSEX. RH10 9QZ  
ENGLAND  
Telephone :- 44 (0) 1293 548301  
Fax :- 44 (0) 1293 560650  
e-mail: contracts@frontierpitts.com  
web site: www.frontierpitts.com

CONTRACTOR

SITE

iBOLLARD

INSTALLATION DETAILS

| DRAWING NUMBER | ISSUE |
|----------------|-------|
| 6856-01        | 2     |