

THIS DRAWING IS THE COPYRIGHT © OF MFD INTERNATIONAL LTD. IT IS PRIVATE AND CONFIDENTIAL AND IS SUPPLIED ON THE EXPRESS CONDITION THAT IT IS NOT USED FOR ANY PURPOSE OR COPIED OR COMMUNICATED TO ANY OTHER PARTY WITHOUT THE WRITTEN CONSENT OF MFD INTERNATIONAL LTD.

NOTES

- DO NOT SCALE FROM THIS DRAWING. ALL DIMENSIONS MUST BE CHECKED AND VERIFIED ON SITE.
- DETAILS ON THIS DRAWING ASSUMES A STRAIGHT AND LEVEL FOUNDATION RUN. IF THE PROPOSED LAYOUT REQUIRES A DIFFERENT LAYOUT THAN THAT PROVIDED ON THIS DRAWING, CONTACT MFD INTERNATIONAL FOR ALTERNATIVE DESIGN SOLUTION.
- STANDARD DETAILS TO BE COMBINED TO FORM APPROPRIATE NO. OF BOLLARDS/RUN. ALL RUNS MUST HAVE THE APPROPRIATE STANDARD ENDS.
- SEPARATE BENDING SCHEDULE MUST BE USED EACH TIME A SECTION IS REQUIRED E.G. FOR 2x "INNER 4m BOLLARD RUN" USE 2x APPROPRIATE BENDING SCHEDULE.

EXCAVATION

- ALL EXCAVATIONS PREFERABLY TO BE HAND DUG DUE TO THE PRESENCE OF EXISTING SERVICES.
- AREAS TO BE EXCAVATED SHOULD BE CAT SCANNED PRIOR TO AND AT REGULAR INTERVALS DURING EXCAVATION, TO LOCATE THE PRESENCE OF SERVICES.
- WHERE EXCAVATION IS OVER-DUG, BACKFILL AROUND BASES SHALL BE IN MASS CONCRETE.
- MIN. GROUND SAFE BEARING PRESSURE 100kN/m²

BLINDING

- SURFACES TO RECEIVE SHEET OVERLAYS OR CONCRETE TO HAVE 50mm OF BLINDING.
- PERMISSIBLE DEVIATIONS ON SURFACE LEVEL: +0 -25mm.

MORTAR FILLING/BEDDING OF BOLLARDS

- SURFACES FILLED WITH:
 - UP TO 50mm - GROUT
 - 50 TO 80mm - DAMP MORTAR OF 1:2 CEMENT, SAND
 - GREATER THAN 80mm - MASS CONCRETE
- WELL TAMPED AGAINST PROPERLY FIXED SUPPORTS AS FILLING PROCEEDS.
- CEMENT: PORTLAND CEMENT TO BS EN 197-1 - CEM 42.5 OR CLASS 52.5.
- SAND: TO BS 882, GRADING LIMIT M OR EQUIVALENT TO BS EN 12620.

GROUT

- GROUT USED FOR INFILL AROUND BOLLARDS TO BE COMBEXTRA HF MANUFACTURED BY FOSROC OR SIMILAR INCLUDING PRE-SCANNING OF PRE-FORMED POCKET WHERE REQUIRED BY MANUFACTURER.
- THE CONTRACTOR IS TO ENSURE THAT PRIOR TO POURING THE GROUT THE AREA IS FREE FROM WATER AND DEBRIS, OIL, GREASE OR ADHERENT MATERIAL. IF THE CONCRETE SURFACE IS DEFECTIVE, IT MUST BE CUT BACK TO A SOUND BASE.
- THE CONTRACTOR MUST DEMONSTRATE THAT THERE ARE NO GAPS, AND THAT NO CRACKS DEVELOP ONCE THE GROUT HAS BEEN POURED.

CONSTRUCTION

- CONSTRUCTION JOINT TO BE:
 - PLACED MID WAY BETWEEN BOLLARDS
 - AT MAXIMUM OF 15m CENTRES
- MAXIMUM CLEAR DISTANCE BETWEEN BOLLARDS TO BE 1200mm.

FOR STANDARD REINFORCED CONCRETE DETAILS REFER TO DRAWING Nr. 3824/000/204

THE STANDARD REBAR DESIGN AND CONFIGURATION CAN BE USED UP TO A MAXIMUM SLOPE OF 1:10 OR 6° SLOPE ANGLE. THEREFORE UP TO THIS SLOPE ANGLE THE LINKS DO NOT HAVE TO REMAIN VERTICAL. THE ENTIRE REBAR CAGE CAN BE LAID TO A FALL.

COPYRIGHT © THIS DRAWING IS APPLICABLE FOR THE SOLE INSTALLATION OF THE PROJECT LISTED IN THE TITLE BLOCK

REV	DATE	DESCRIPTION	CAD	CHKD
A	15.06.12	ISSUED FOR CONSTRUCTION	MDL	APJ



Montfort Lodge t: +44 (0)1794 516171
Botley Road f: +44 (0)1794 524460
Romsey e: mail@mfdgroup.co.uk
Hampshire SO51 5SW
United Kingdom w: www.mfdgroup.co.uk

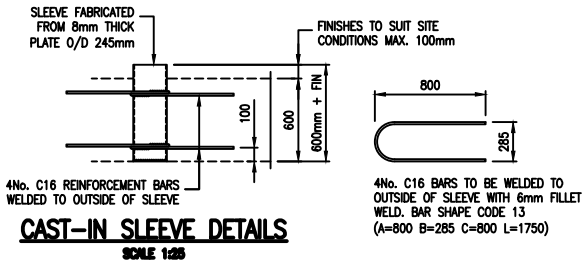
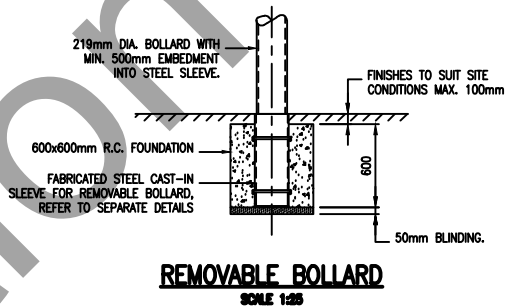
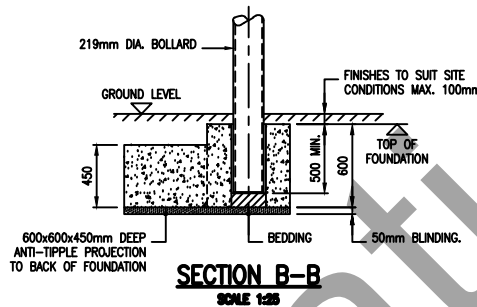
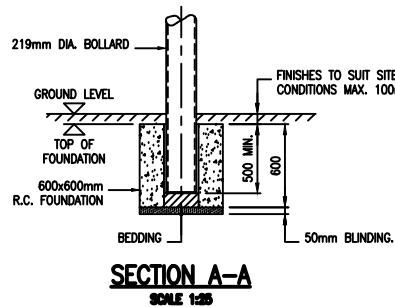
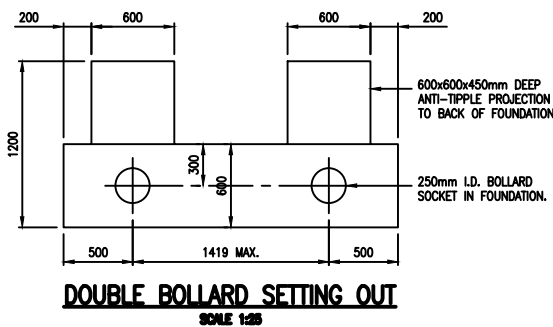
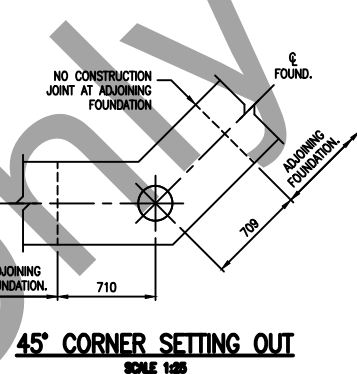
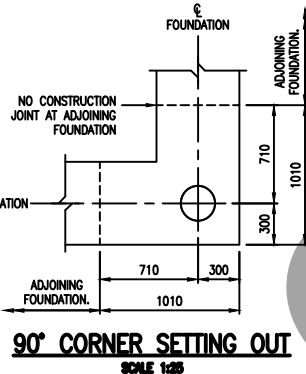
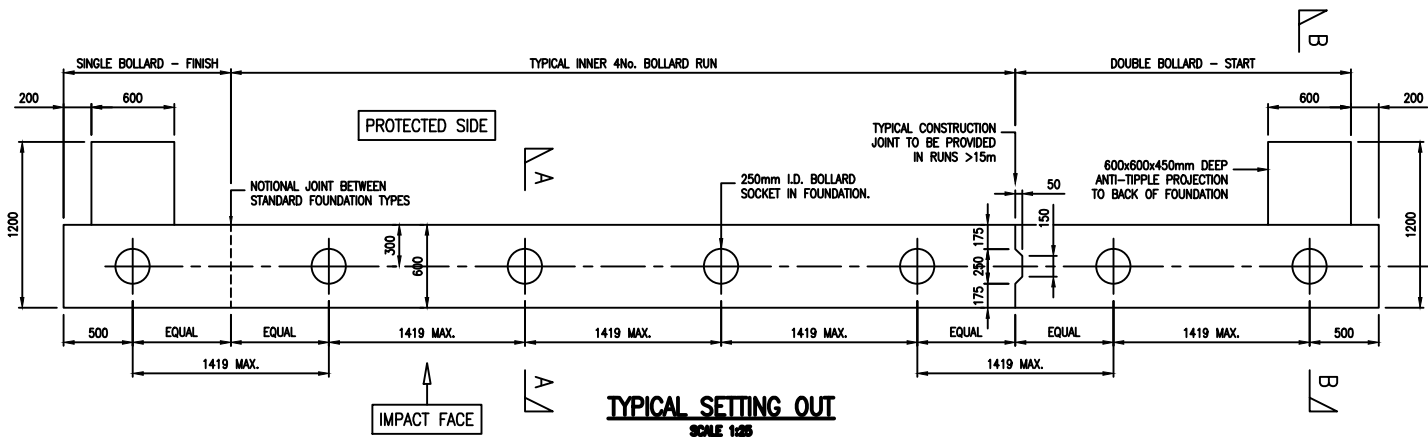


PROJECT

TITLE
VENUS - 219mm DIA. BOLLARD
STANDARD FOUNDATION DETAILS
(7.5T AT 30mph)

SCALE	AS SHOWN	DATE	15.06.12
DESIGN/CAD	MDL	REVIEWED BY	APJ
DRAWING NUMBER	3824/000/203	REV	A

CONSTRUCTION ISSUE



GENERIC BOLLARD ARRANGEMENTS

POSSIBLE ARRANGEMENTS FOR INFORMATION BUT NOT LIMITED TO THOSE SHOWN BELOW

