

INTRUDER RESISTANT SECURITY GATES & TURNSTILES

LPS1175 - LOSS PREVENTION STANDARD

FOREWORD

LPS1175 Security Ratings (SR) and Approvals

Security Rating	Tool Category	Resistance Provided	Working time (Max.)	Max. Test Duration
SR1/A1	A	Providing resistance for a short length of time against attack using basic, every-day readily available tools such as small tools lasting up to 1 min	1 Min	10 Mins
SR2/B3	B	Providing resistance for a moderate length of time against attack using more advanced hand tools and cutting tools lasting up to 3 mins	3 Mins	15 Mins
SR3/C5	C	Providing resistance for an extended length of time determined attack using heavy duty hand tools, and low voltage battery operated tools using a range of techniques that include making noise lasting up to 5 mins	5 Mins	20 Mins
SR4/D10	D	Providing resistance for a long time against an experienced attack using a wide range of advanced heavy duty tools, including battery operated power tools, using experienced methods of forced entry, lasting up to 10 mins	10 Mins	30 Mins

BRE (British Research Establishment) is the world leading multi-disciplinary building science centre with a mission to improve the built environment through research and knowledge generation.

BRE's third-party certification services include LPCB (Loss Prevention Certification Board) approved products. All LPCB certificated intruder resistant building components, strongpoints, security enclosures and free-standing barriers are listed in the 'Red Book' www.redbooklive.com

One of the challenges for Purchasers and Specifiers to make buildings safe and secure, is selecting and installing security products that actually do what they claim.

Frontier Pitts LPS1175 tested and approved Vehicle Gates and Pedestrian Gates and Turnstiles offer a more substantial delay from hand and power tools during forcible attack. Such systems are designed and tested for installations on critical national importance (CNI) sites which require the highest possible level of perimeter protection.



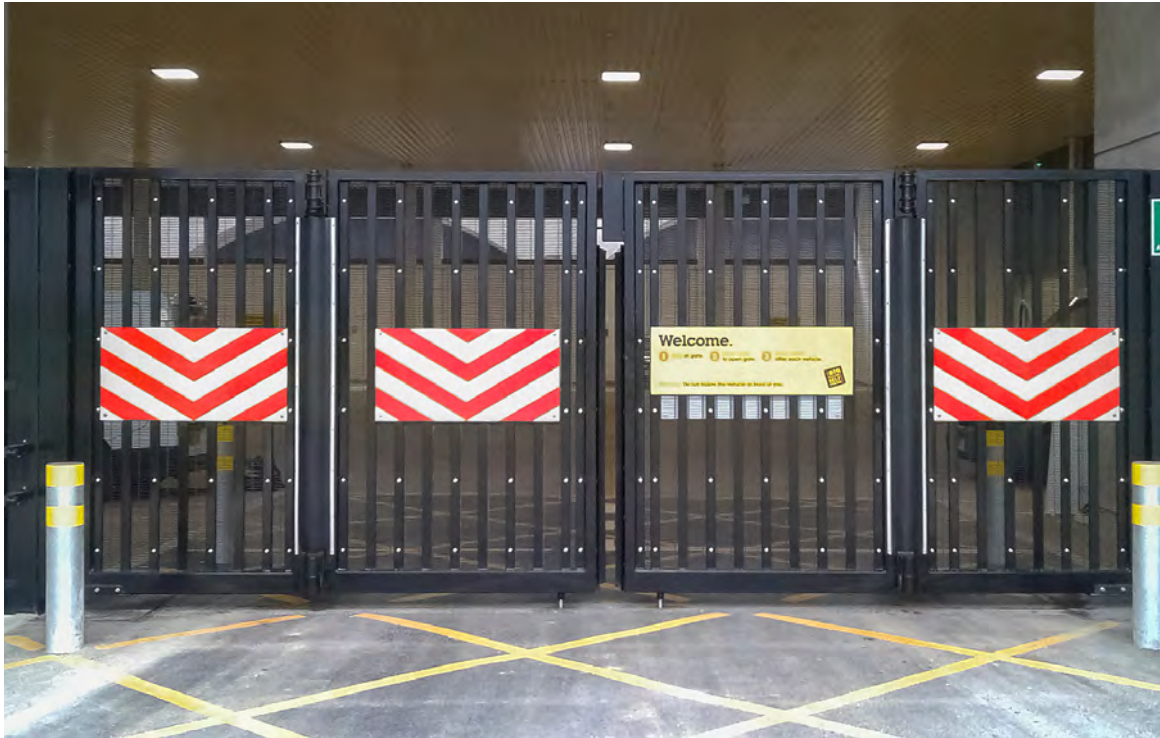
SECURITY RATINGS

Comparison of security rating classifications used in LPS1175: Issue 7 and Issue 8

		Security Rating Classification							
Delay	20 Minutes	A20	B20	C20	D20	E20	F20	G20	H20
	15 Minutes	A15	B15	C15	D15	E15	F15	G15	H15
	10 Minutes	A10	B10	C10	D10 (SR4)	E10	F10	G10	H10
	5 Minutes	A5	B5	C5 (SR3)	D5	E5	F5	G5	H5
	3 Minutes	A3	B3 (SR2)	C3	D3	E3	F3	G3	H3
	1 Minute	A1 (SR1)	B1	C1	D1	E1	F1	G1	H1
Tool Kit	LPS1175: Issue 8	A	B	C	D	E	F	G	H
	LPS1175 : Issue 7	A	B	C	D	D+	E	G	G

BI-FOLDING GATES

AUTOMATIC LPS1175 SR1, SR2 & SR3



Platinum Bi-folding Gates

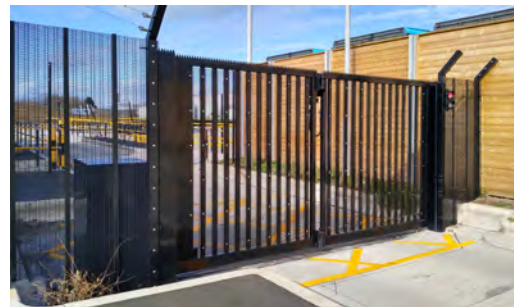
The first Approved LPS1175 Automatic Bi-folding Gates in the World! *

- LPS1175: Issue 7 SR1, SR2 & SR3
- Single leaf up to 5m
- Double leaf up to 10m
- Gates are powered by actuators
- Frontier Pitts manufacture a large range of actuators to suit the made to order Security Gate.

Terra Bi-fold Gate

This gate is IWA14 and LPS1175 B3 (SR2) which is the first gate on the market to be dual certified.

** correct at time of print*



SLIDING & HINGED GATES

AUTOMATIC LPS1175 SR1, SR2 & SR3



Platinum Sliding Gates

- LPS1175: issue 7 SR1, SR2 & SR3
- Widths up to 10m

Platinum Sliding Gates - Bi-parting pair

- LPS1175: issue 7 SR1, SR2 & SR3
- Clear opening widths available from 6-14m
- Height 3m

Platinum Hinged Gates

- LPS1175: issue 7 SR1, SR2 & SR3
- Single leaf up to 5m
- Double leaf up to 10m
- Hinged Gates are powered by actuators
- Frontier Pitts manufacture a large range of actuators to suit to the manufactured to order Security Gates.



PEDESTRIAN CONTROL GATES & TURNSTILES

AUTOMATIC LPS1175 B3/SR2, SR3 & SR4



Platinum Pedestrian Gates

- LPS1175: issue 7 SR1, SR2 & SR3
- 3 models: Manual, Semi-automatic and Fully powered

Terra Diamond Turnstile

- LPS1175: Issue 6.1 SR3 & SR4
- Approved for Government Use, please contact CPNI.



Platinum Turnstile

- LPS1175 Issue 8 B3
- Now available with a choice of 90° or 120° rotors

CPNI[®]

Centre for the Protection of National Infrastructure

Approved for Government Use, please contact CPNI for details

